

# GTX<sup>†</sup> LIMITED 325

The standard for touring performance.

## WHAT'S NEW

- 10.25 in. touchscreen display with BRP GO!
- 2 Pop-Up Cleats
- Hydraulic Steering Damper
- Rotax® 1630 ACE™ - 325

## KEY FEATURES

- Rotax® 1630 ACE™ - 325
- ST3™ Hull
- BRP premium audio system and USB port
- iDF - Intelligent Debris Free Pump System
- Direct-access front storage
- **Limited Package:** USB port, watercraft cover, storage bin organizer, knee pads, exclusive coloration and more



○ White Pearl Premium  
○ Teal Metallic

**iDF/iTC/iBR/ST3/CLCS/ECO**

## CAPACITY

Rider capacity	○○○
Weight capacity	272 kg
Fuel capacity	70 L
Glove box	2.9 L
Front bin	96 L
Storage capacity - Total	98.9 L

## DIMENSIONS

Length (bumper to bumper)	345.1 cm
Width	125 cm
Height	114 cm

## HULL

Type	ST3™ Hull
Material	Fiberglass

## OTHER FEATURES

Ergolock™ two-piece seat with stepped design	LinQ™ attachment system
Seat strap	Wide angle mirrors
iBR® - Intelligent Brake & Reverse	Handle Grips with palm rest
VTS™ (Variable Trim System)	Footwell carpets
Boarding ladder	Large swim platform
RF D.E.S.S.™ key	Tilt steering
Watertight phone compartment	Ski tow eye

## ROTAX ENGINE

1630 ACE™ - 325

Intake system	Supercharged with external intercooler
Displacement	1,630 cc
Cooling	Closed-Loop Cooling System (CLCS)
Reverse system	Electronic iBR**
Starter	Electric
Fuel type	98 octane
Throttle system	iTC™ (Intelligent Throttle Control)
Exhaust System	D-Sea-Bel™ system

## GAUGE

Type of gauge	10.25 in. touchscreen display with BRP Connect	
Main functions	BRP Connect Music	Clock VTS™
	Navigation	Fuel consumption
	Bluetooth <sup>†</sup> connectivity	Fuel autonomy
	Speedometer	Water Temperature
	RPM	Vehicle hours
iTC System - mode	Sport mode	Slow mode
	ECO® mode	Speed regulator

## WEIGHT

Dry weight (oil, coolant, no fuel)	385 kg
Power to weight ratio (HP / lbs)	0.353357

## WARRANTY

BRP limited warranty covers the watercraft for two years.

\*Electronic brake, neutral and reverse.

†GTX is a trademark of Castrol Limited used under license.

‡Bluetooth<sup>†</sup> is a registered trademark owned by Bluetooth<sup>†</sup> SIG, Inc. and any use of such trademarks by BRP is under license.



○ White Pearl Premium



● Teal Metallic

**FEATURE HIGHLIGHTS**



**Limited Package**

USB port, watercraft cover, storage bin organizer, knee pads, exclusive coloration and more



**BRP Audio - premium system**

A factory-installed, truly waterproof Bluetooth<sup>†</sup> audio system for an extra dose of fun and entertainment on the water.



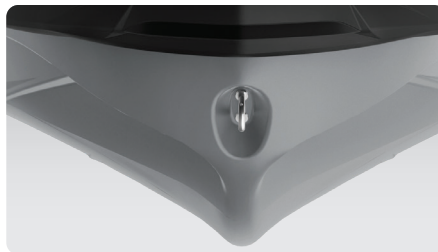
**iDF - Intelligent Debris Free system**

An innovative, industry-first system that allows you to free your pump of weeds and debris with intuitive handlebar-activated controls.



**ROTAX® 1630 ACE™ - 325 ENGINE**

The Rotax® 1630 ACE™-325 is the industry's most powerful PWC engine from factory. With its 240 kW (325hp), this engine delivers incredible acceleration and power thanks to innovative engineering for uncompromised offshore performance.



**ST3™ Hull**

An innovative hull that sets the benchmark for rough water handling, stability, and offshore performance.<sup>4</sup>



**10.25 in Touchscreen Display with BRP Connect**

Bring your on-water experience to another level with this premium and elegant touchscreen display developed specifically for Sea-Doo riders. With enhanced connectivity and intuitivity, it features driving statistics, compass, marine navigation with the BRP GO! app, music and much more.

©2024 Bombardier Recreational Products Inc., (BRP). All rights reserved. ®, TM and the BRP logo are trademarks of Bombardier Recreational Products Inc. or its affiliates. All product comparisons, industry and market claims refer to new sit-down PWC with 4-stroke engines. Watercraft performance may vary depending on, among other things, general conditions, ambient temperature, altitude, riding ability and rider/passenger weight. Testing of competitive models done under identical conditions. Because of our ongoing commitment to product quality and innovation, BRP reserves the right at any time to discontinue or change specifications, price, design, features, models, or equipment without incurring any obligation. †Garmin is a trademark of Garmin Ltd. or its subsidiaries.