



2025 PERFORMANCE

RXT[®]-X[®] RS 325

The ultimate offshore performance watercraft.

WHAT'S NEW

- Hydraulic steering damper

KEY FEATURES

- Rotax[®] 1630 ACE - 325
- ST3[™] Hull
- Launch control
- Low-rise racing handlebar
- Ergolock[™] two-piece racing seat
- Tilt steering
- Full-length angled wedges
- X-sponsons
- Tech Package: BRP Audio - premium system, full color 7.8" wide display and USB port
- Stainless Polished Impeller

CAPACITY

Rider capacity	3
Weight capacity	272 kg
Fuel capacity	70 L
Glove box	2.9 L
Front bin	96 L
Storage capacity - Total	98.9 L

DIMENSIONS

Length (bumper to bumper)	345 cm
Width	125 cm
Height	115 cm

HULL

Type	ST3 [™] Hull
Material	Fiberglass

OTHER FEATURES

Seat strap	LinQ [™] attachment system
iBR [®] - Intelligent Brake & Reverse	Knee pads
Extended VTS [™] (Variable Trim System)	Wide-angle mirrors
RF D.E.S.S. [™] key	Round handle grips
Direct-access front storage	Footwell carpets
Watertight phone compartment	Large swim platform
	Ski tow eye



NEW Metallic Tan and Lava Red Premium

Ice Metal and Manta Green

iTC/iBR/ST3/CLCS/ECO

ROTAX ENGINE

1630 ACE[™] - 325

Intake system	Supercharged with external intercooler
Displacement	1,630 cc
Cooling	Closed-Loop Cooling System (CLCS)
Reverse system	Electronic iBR [®] *
Starter	Electric
Fuel type	98 octane
Throttle system	iTC [™] (Intelligent Throttle Control)
Exhaust System	D-Sea-Bel [™] system

GAUGE

Type of gauge	Large panoramic 7.8" wide LCD display	
Main functions	BRP Connect Music	Clock VTS [™]
	Navigation	Fuel consumption
	Bluetooth [†] connectivity	Fuel autonomy
	Speedometer	Top speed and average speed
	RPM	Vehicle hours
iTC System - mode	Sport mode	Speed regulator
	ECO [®] mode	Launch control
	Slow mode	

WEIGHT

Dry weight (oil, coolant, no fuel)	382 kg
Power to weight ratio (HP / lbs)	0.361882


WARRANTY

BRP limited warranty covers the watercraft for two years.


*Electronic brake, neutral and reverse.

†Bluetooth[†] is a registered trademark owned by Bluetooth[†] SIG, Inc. and any use of such trademarks by BRP is under license.



 NEW Metallic Tan and Lava Red *Premium*



 Ice Metal and Manta Green

FEATURE HIGHLIGHTS



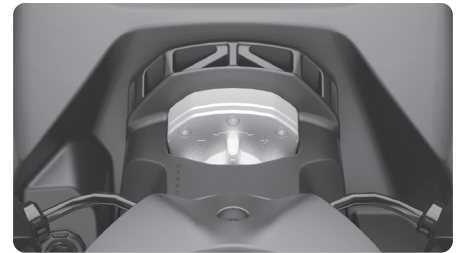
ROTAX® 1630 ACE™ - 325 ENGINE

The Rotax® 1630 ACE™-325 is the industry's most powerful PWC engine from factory. With its 240 kW (325hp), this engine delivers incredible acceleration and power thanks to innovative engineering for uncompromised offshore performance.



Hydraulic Steering Damper

3 steering positions to quickly control the stiffness. It adds riding precision by removing undesired input in rougher conditions. It provides a premium feeling and improved control to the rider.



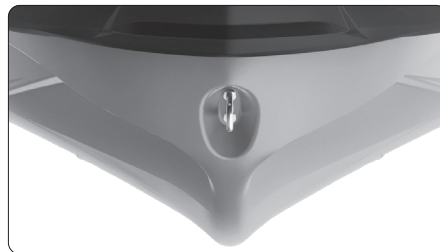
Tech Package

Levels up entertainment and functionality on the water. It includes a factory-installed, truly waterproof Bluetooth® audio system, a 7.8" color display and a usb port.



Ergolock™ System

A narrow seat profile with deep knee pockets lets riders sit naturally and use the lower body to hold onto the machine for more control.



ST3™ Hull

An innovative hull that sets the benchmark for rough water handling, stability, and offshore performance.⁴



Swim platform with Integrated LinQ™ System

Exclusive quick-attach system on the largest swim platform in the industry that allows for easy installation of accessories.

©2024 Bombardier Recreational Products Inc., (BRP). All rights reserved. ®, TM and the BRP logo are trademarks of Bombardier Recreational Products Inc. or its affiliates. All product comparisons, industry and market claims refer to new sit-down PWC with 4-stroke engines. Watercraft performance may vary depending on, among other things, general conditions, ambient temperature, altitude, riding ability and rider/passenger weight. Testing of competitive models done under identical conditions. Because of our ongoing commitment to product quality and innovation, BRP reserves the right at any time to discontinue or change specifications, price, design, features, models, or equipment without incurring any obligation. †Garmin is a trademark of Garmin Ltd. or its subsidiaries.