

R/DE LIKE NO OTHER™

***can-am***®



ENGLISH

**2022 BROCHURE**



**R/DE  
LIKE  
NO  
OTHER™**

**MAKE EVERY  
ADVENTURE A  
BLAST**

### **THE ROAD IS YOURS TO ENJOY**

All riders deserve to experience the excitement of the open road. As an inclusive brand, we believe that roads are for everybody, no matter where in the world they're from.

### **OPEN TO ALL**

At Can-Am On-Road, our mission is to keep finding new ways to share the road. To make it more accessible, accepting and inclusive space for riders from all walks of life.

### **SEE YOU OUT THERE**

The more people we invite to share the road with us, the better it gets for everyone. Welcoming in new rider, inspiring more women to take the wheel, appreciating our longtime 3-wheel enthusiasts



**THIS YEAR, WE'RE BRINGING YOUR ON-ROAD EXPERIENCE TO A NEW LEVEL. OUR NEW LINEUP IS SO ON POINT THAT YOU'LL EXPERIENCE THRILLS THE MINUTE YOU TURN THE ENGINE ON!**

# 3 REASONS TO RIDE 3-WHEEL

## EASY TO RIDE

Grab life by the handlebars and experience limitless freedom with a Can-Am On-Road vehicle that's as easy to ride as it is exhilarating. With a quick learning curve to riding, all you have to worry about is conquering the curves on the road.

## GO FURTHER

Engineered from the ground up with performance that offers you confidence and peace of mind, so you can squeeze every last ounce out of every road and push your limits to the very brink.

## CRUISE IN CONTROL

With its incomparable look, two wheels in the front and one in the back, there's no road you can't conquer. Every Can-Am On-Road vehicle is designed for ultimate stability so you can handle every twist and turn the road throws at you.



[canamonroad.com/licence](https://canamonroad.com/licence)



## WHICH LICENCE DO I NEED?

\* In the UK, you can ride Can-Am On-Road vehicles with a car licence (B) from the age of 21 years old. In Norway and Finland, you can ride Can-Am On-Road vehicles with a car licence (B) under certain conditions. More details on A and B licence requirements at [canamonroad.com/licence](https://canamonroad.com/licence). For all other countries, please ask your local authority.

"We are free women, free to ride, free to have fun. [...] Dare, indulge yourselves, don't be afraid of sexist remarks and enjoy!"  
Nelly, Ryker owner, France

"To me, riding a Spyder means being in charge, freedom, happiness and adventure."  
Margot, Spyder owner, Germany.

"We drive every free moment. We ride, tour around, we find a mountain road or somewhere else, it doesn't matter. We map the route and we just drive. We are simply having fun."  
Yordan, Spyder owner, Bulgaria.

"I always ride in group. Everyone enjoying riding, whether Spyder, motorcycle or quad. The main thing is fun ..."  
Tanja, Spyder owner, Germany

"I started riding because I wanted to learn a new skill. Something that would let enjoy nature, travel and have peace of mind. That's exactly what the Can-Am Spyder RT provides for me. The joy of being able to hit the open road is so liberating and mind-clearing! I try to ride everywhere I go, especially on the weekends."  
Kelvin, Spyder owner, United States.

HOW TO

# PICK THE RIGHT RIDE

YOU'RE CONSIDERING A 3-WHEEL VEHICLE. YOU LIKE THAT THEY'RE EASY TO RIDE AND THAT THEY MAKE YOU FEEL COMFORTABLE AND IN CONTROL. YOU LOVE THAT THEY LET YOU GO FARTHER AND GET OUT ON THE OPEN ROAD. BUT WHICH IS THE RIGHT ONE FOR YOU?



**1. IF YOU'RE LOOKING FOR SOMETHING FUN AND ACCESSIBLE, START HERE**

## CAN-AM® RYKER™

Joining the Can-Am Ryker family means being able to customize your vehicle to your specifications. If you're looking for something fun and accessible, start here. From the affordable Ryker 600 to the sporty thrill ride of the new Ryker Sport or the all-road adventure loving Ryker Rally, this might be the machine for you.

**2. PREMIUM COMFORT AND CONVENIENCE CRUISER WITH BOLD MUSCULAR DESIGN**

## CAN-AM® SPYDER® F3™

Lovers of Can-Am Spyder's bold muscular design will also want to investigate the range of F3 vehicles. From the impressive entry level F3 all the way up to the F3 Limited Special Series, which boasts premium comfort and convenience cruiser, the choice here is almost overwhelming.

**3. DREAMING OF LONG ROAD TRIPS? OR LOOKING FOR A LUXURY TOURING OPEN-ROAD EXPERIENCE?**

## CAN-AM® SPYDER RT™

If you're dreaming of long road trips, or if what you're after is a luxury touring open-road experience, then you should start looking at the Can-Am Spyder RT vehicles. From a touring experience for two atop the RT Limited to a blissfully comfortable ride on the elegant RT Sea-to-Sky, these are vehicles made for explorers.



THANKFULLY CAN-AM IS HERE TO HELP FIND THE RIGHT RIDE FOR EVERY RIDER WITH ANSWERS TO ANY OF YOUR QUESTIONS. CONTACT YOUR DEALER OR VISIT THE CAN-AM ON-ROAD WEBSITE TODAY!

canamonroad.com

# UNLEASH THE FUN WITH CAN-AM RYKER



## RYKER FAMILY

### RIDE EASY

Whether you're new or a seasoned rider, the Can-Am Ryker was built for you. With an effortless twist-and-go automatic transmission and state-of-the-art technology, you'll feel like a natural on the road.

### HAVE A BLAST

The Can-Am Ryker lets your inner child play. With a lower seating position, you'll feel in control and take on every curve. Plus, you can add to the excitement with Sport Mode and Rally Mode on select models!

### GO ANYWHERE

Explore the streets or go off on dirt roads—this ride can handle it. With higher ground clearance, it's capable of going beyond the pavement and into new territory. See how far you can take it.

THE CAN-AM RYKER MODELS ARE ALL ABOUT ACCESSIBILITY, FUN TIMES AND EXPLORING NEW PLAYGROUNDS. WHERE WILL YOU PLAY FIRST?

# SAY HELLO TO THE ALL-NEW RYKER RALLY

When riding a Can-Am Ryker, you're able to really connect with the road. You can feel it. And if you're the type of rider who likes to go your own way off the beaten path, you need to check out the Can-Am Ryker Rally.



### ENDLESS POSSIBILITIES FOR ENDLESS FUN

Max Mount structure for adding passenger accessories and cargo options, to transform the way you ride in seconds!

### ENHANCED RIDER PROTECTION AND COMFORT

Rally tires and reinforced rims, front vehicle protection, skid plate, air intake with pre-filter, mud flaps and push bar.

### READY FOR ALL ROAD CONDITIONS

Rally tires and reinforced rims, front vehicle protection, skid plate, air intake with pre-filter, mud flaps and push bar.

## WHICH RYKER FITS YOU BEST?

[canamonroad.com/demo](https://canamonroad.com/demo)



BOOK A DEMO

### THERE'S A RIDE FOR EVERY RIDER.

Quickly see how each Ryker model compares and what experience fits best to find the right ride for your needs.

MODELS	RYKER With Rotax 600 engine	RYKER With Rotax 900 engine	RYKER SPORT	RYKER RALLY
RIDING LEVEL	Beginners or little riding experience ☆☆☆   ★★☆☆	From beginners to experienced riders ★☆☆ — ★★★★★		From beginners to experienced riders looking for more playgrounds ☆☆☆ — ★★★★★
SOLO OR DUO	Upgrade possible via accessories 		Prepared for 2-up riding (requires passenger seat accessory) 	
PLAYGROUND	Paved roads 			Paved roads  Unpaved roads
RIDING LENGTH	Day trips 		Overnight trips 	



SCAN FOR MORE

[canamryker.com](https://canamryker.com)



RYKER



**CAN-AM RYKER**  
000F1NB00 / 000F2NB00



- Peace of mind with automatic twist-and-go transmission, vehicle stability system and fuel tank lock
- Low-maintenance drivetrain with driveshaft technology
- Tool-free ergonomic adjustability and 100K ways to customize it
- Eco Mode and Sport Mode (for more fun drifting on paved roads) available with choice of 900 cc engine



**CAN-AM RYKER SPORT**  
000F5NB00



- All features of the Ryker model equipped with the Rotax 900 engine, PLUS:**
- Bold sport styling with new trims and finishes
  - Enhanced rider comfort with upgraded suspension: KYB† HPG with preload adjustment and Sport comfort seat
  - Equipped with Max Mount structure for adding passenger accessories and cargo options
  - Cruise control

**CAN-AM RYKER RALLY**  
000F3NB00



**All features of the Ryker model equipped with the Rotax 900 engine, PLUS:**

- Ready for all road conditions: rally tires and reinforced rims, front vehicle protection, skid plate, air intake with pre-filter, mud flaps and Akrapovič exhaust
- Enhanced rider protection and comfort, featuring hand guards, rally handlebar and comfort seat, adjustable anti-slip foot pegs and upgraded suspension: Front and rear KYB† HPG shocks with remote adjusters and 2.5 cm (1 inch) of extra suspension travel
- Equipped with Max Mount structure for adding passenger accessories and cargo options
- Rally Mode (for more fun drifting on loose road surfaces) and cruise control

COLOR PANELS

**CLASSIC SERIES1**



Intense Black



Adrenaline Red



Yellow Shock

**EPIC SERIES**



Carbon Black



Immortal White



Liquid Steel

**EXCLUSIVE SERIES2**



Liquid Gold



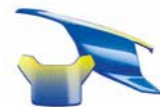
Sand Storm



Heritage Yellow



Mint Freeze



Galactic Blue



Acid Yellow

**NEW PANELS**



Heritage White IV



Pinky Pineapple



Nitro Blue



Sonic Silver

# CUSTOMISE YOUR CAN-AM RYKER AND SWAP YOUR STYLE AS OFTEN AS YOU LIKE.

Our latest collection of accessories and apparel is coming your way. They'll elevate your riding experience in more ways than one and the choice is yours for the making!



## UNPACK YOUR BAGS

**LINQ MODULAR CARGO BOX**  
715005494

A sturdy way to organize your gear, the LinQ Modular Box has 10 L (2.6 gal) of capacity and can be stacked with other modular boxes to increase your vehicle's storage space. The perfect way to bring as little or as much as you might need.



**THERMAL INSERT FOR LINQ MODULAR BOX**  
219401110

This insulated liner transforms your modular box into an effective and portable ice cold cooler. So pack some drinks and a lunch and stay out on the road a bit longer!



**RYKER LINQ RACK**  
219401103

Can-Am Ryker riders who are looking for more cargo options should check out this add-on to the LinQ Plate. Incredibly versatile, this rack comes with a cargo net and a secured latch allowing it to hold a wide range of accessories. The possibilities of what you can pack on there are limited only by your imagination.



BUILD YOURS

canamonroad.com/configurator



## RIDE FOR LONGER

**AUDIO SYSTEM**  
219401033

A plug and play audio system powered by MTX Audio lets you blast the tunes you want to hear right from your ride.



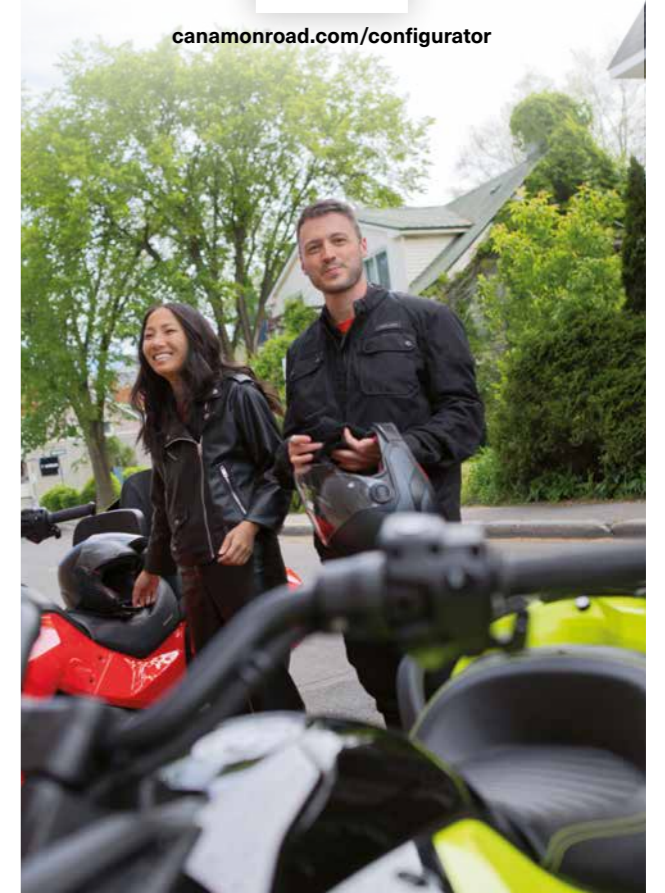
**CRUISE CONTROL**  
219401135

Add an electronic cruise control to your Ryker to increase comfort during long rides.



**ADJUSTABLE SPORT WINDSHIELD**  
219401023

Environmental hazards happen, but with front vehicle protection in place you can stay shielded from whatever the road or weather has in store.



# LET THE THRILLS SET YOU FREE WITH CAN-AM SPYDER F3

## SPYDER F3 FAMILY

### RELAXED CRUISER ERGONOMICS

For short or long rides, comfort is everything. The Spyder F3 has a comfort seat and can be adjusted specifically for you with the UFit System, it also has a detachable backrest and a short-reach handlebar for max control.

### BOLD, MUSCULAR STYLING

Turn heads with this bold statement on wheels. With a muscular stance and an exposed engine, as well as fresh trims and colouration, your presence is sure to be noticed.

### ULTIMATE PERFORMANCE

Spirited performance in every ride. With a superior power-to-weight ratio, a power-optimized gear ratio, KYB shocks and 115 HP on some models, your pulse will pound as you feel the thrill of the open road.

THE CAN-AM SPYDER F3 MODELS WILL PUSH THE LIMITS OF PERFORMANCE, WHILE THE RELAXED SEATING POSITION WILL HAVE YOU ALWAYS LOOKING FOR MORE.

# NEW VIBRANT COLOURS AND SPECIAL SERIES

Turn heads with this bold statement on wheels. With a muscular stance and an exposed engine, as well as fresh trims and colouration, your presence is sure to be noticed.



### THE ULTIMATE CRUISER FOR TWO

The new Spyder F3 Limited Special Series package offers the best for you and your passenger. Its comfortable seating, top case rack for extra storage and premium colourations make cruising for two a breeze.

### BOLD IS THE WAY

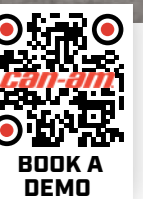
Whether it's bright Manta Green or Viper Red, this year's new colourations won't go unnoticed and Special Series enhancements will take your ride to the next level.

### THE ULTIMATE PERFORMANCE

Hit the road in style with the Spyder F3-S Special Series, and when you want to turn things up a notch, the low center of gravity, higher-performance shocks and Sport Mode are ready.

## WHICH SPYDER F3 FITS YOU BEST

[canamonroad.com/demo](https://canamonroad.com/demo)



### THERE'S A RIDE FOR EVERY RIDER.

Quickly see how each Spyder F3 model compares and what experience fits best to find the right ride for your needs.

MODELS	SPYDER F3	SPYDER F3-S	SPYDER F3-S SPECIAL SERIES	SPYDER F3 LIMITED	SPYDER F3 LIMITED SPECIAL SERIES
SOLO OR DUO				+ COMFORT	
RIDING STYLE	Sporty rides		Sporty turn-head rides	Cruising rides	Cruising turn-head comfort rides
INFOTAINMENT	4.5" digital display gauge 	7.6" digital display gauge 	7.8" LCD color display with BRP Connect 	7.8" LCD color display with BRP Connect and 6-speaker sound system with radio 	
RIDING LENGTH	Overnight trips 			Multi-day trips 	



[canamspyder.com/f3](https://canamspyder.com/f3)



SPYDER F3



**CAN-AM SPYDER F3**

000E5NB00



ROTAX® 1330 CC ENGINE (115 HP)

- Semi-automatic transmission, Vehicle Stability System and Eco Mode
- Relaxed cruiser ergonomics with UFit System
- 24.4 L (6.5 gal) storage capacity
- Front fenders with integrated LED lights
- 11.4 cm (4.5") wide digital gauge



**CAN-AM SPYDER F3-S**

000E6NB00



ROTAX® 1330 CC ENGINE (115 HP)

**All Spyder F3 model features, plus:**

- Octane blue colour accents
- Gas-charged KYB† front shocks
- Sport mode for more fun drifting on paved roads and cruise control
- 19.3 cm (7.6") wide digital gauge

**CAN-AM SPYDER F3-S SPECIAL SERIES**

000E6NG00



ROTAX® 1330 CC ENGINE (115 HP)

**All Spyder F3-S model features, plus:**

- The new vibrant Manta Green colour
- Sportier look with Super Sport Grille, Gauge Spoiler and Mono Seat Cowl (passenger seat included but not installed)
- A special package for the sport enthusiasts that comes pre-equipped with several accessories.
- 19.8 cm (7.8") wide digital gauge with BRP Connect



**CAN-AM SPYDER F3 LIMITED**

000H8NB00



ROTAX® 1330 CC ENGINE (115 HP)

**All Spyder F3-S model features, plus:**

- Added comfort with better wind protection, self-leveling rear air suspension and integrated passenger backrest, footboards and heated grips
- 138 L (36.5 gal) storage capacity, with top case
- Premium BRP Audio 6-speaker sound system, audio control keypad and cruise control
- 19.8 cm (7.8") wide digital gauge with BRP Connect



**CAN-AM SPYDER F3 LIMITED SPECIAL SERIES**

000H7NB00



ROTAX® 1330 CC ENGINE (115 HP)

**All Spyder F3 Limited model features, plus:**

- The new bright Viper Red colour
- Ultimate comfort for two with comfort seat, detachable rider backrest and short-reach handlebar
- Added convenience and style with top case rack and super sport grille
- New 12-spoke wheels

**CUSTOMISE YOUR CAN-AM SPYDER F3 AND GO THE EXTRA MILE.**

Our latest collection of accessories and apparel is coming your way. They'll elevate your riding experience in more ways than one and the choice is yours for the making!



**POWER CRUISER SPYDER F3-S SPECIAL SERIES**



**DRIVER FOOTBOARDS**

219400903

Replace stock pegs for additional comfort. Come with rubber pads and mounting hardware. Can be positioned with the UFit System.



**SHAD WATERPROOF REAR BAG**

219401099

Versatile bag made from durable, easy-to-clean material. Protect your belonging while keeping it accessible with a waterproof main compartment and glove-friendly zippers.



**HEATED DRIVER GRIPS**

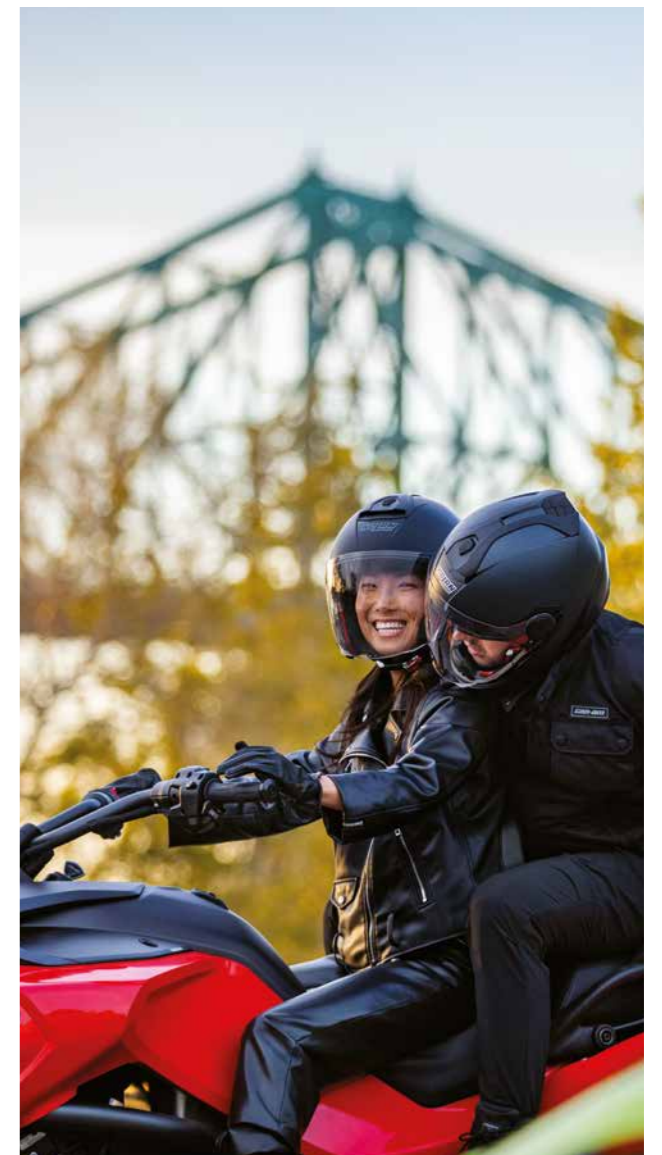
219400509

Easily install this complete heating kit with one intensity setting. Brave the weather and don't let anything stop you.



BUILD YOURS

canamonroad.com/configurator





# CRUISE AROUND IN LUXURY WITH CAN-AM SPYDER RT



## SPYDER RT FAMILY

### MODERN DESIGN

From the unique rich textures and finishes to the premium LED headlights and modern console with full colour LCD display, sophistication is found in every last detail of the Can-Am Spyder RT.

### PREMIUM COMFORT

Ultra-comfortable adaptive foam seats add to the large floorboard, cruise control and superior wind protection so you and your passenger can put more distance between stops.

### NEXT-LEVEL CONVENIENCE

The storage is impressive: it's LinQ-compatible and comes with integrated hard side luggage. It also has an adjustable electric windshield with memory and an audio control keypad for ultimate efficiency.

THE CAN-AM SPYDER RT MODELS AREN'T JUST THE KEY TO UNLOCKING WHAT THE OPEN ROAD HAS TO OFFER, IT'S THE PINNACLE OF LUXURY TOURING.

# PERFECT, DOWN TO THE LAST DETAIL

We've improved the Can-Am Spyder RT models to give you an even better experience. Now you can ride off with a new rider backrest, upper and lower wind deflectors, new trims and colouration, plus a fresh set of wheels.



### ELEGANT TOURING

Discover the new Can-Am Spyder RT Sea-to-Sky. Its Mystery Blue colour will add undeniable sleekness to your ride, and its added comfort and convenience features will let you ride wherever the road takes you.

### EXUDE LUXURY WITH PREMIUM SHADES

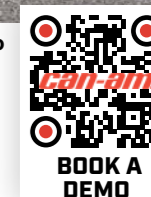
The new colour shades for the Spyder RT models definitely live up to expectations. Choose from Mystery Blue, Hyper Silver, Carbon Black to elevate the appearance of your ride.

### EXCLUSIVE FEATURES

Experience unrivaled touring comfort in luxury that fits your style. The Spyder RT Limited features a long-distance seat, generous wind protection and many more features designed for the ultimate adventure for two.

## THE NEW SPYDER RT SEA-TO-SKY

[canamonroad.com/demo](https://canamonroad.com/demo)



## FEATURE HIGHLIGHTS

- 1 ADJUSTABLE DRIVER BACKREST
- 2 ULTRA COMFORTABLE SEATS
- 3 FULLY PAINTED TOP CASE
- 4 ADJUSTABLE SIDE WIND DEFLECTORS
- 5 UNIQUE 12-SPOKE WHEELS
- 6 MODERN SILVER COLORED TRIMS AND BADGING



[canamspyder.com/rt](https://canamspyder.com/rt)

CAN-AM SPYDER RT LIMITED



ROTAX® 1330 CC ENGINE (115 HP)

- 000G1NB00 DEEP MARSALA METALLIC
- 000G1NF00 CARBON BLACK
- 000G1NK00 HYPER SILVER

- Semi-automatic transmission, Vehicle Stability System and Eco Mode
- Ultimate comfort for 2 with self-leveling rear air suspension, integrated passenger backrest, heated driver and passenger seats and grips.
- 177 L (47 gal) storage capacity with LinQ-compatible top case
- BRP Audio Premium 6-speaker sound system and a full-colour 19.8 cm (7.8 inches) wide LCD display with BRP Connect
- Premium LED headlights, front cargo light and liner.



CAN-AM SPYDER RT  
SEA-TO-SKY  
000H8NB00



ROTAX® 1330 CC ENGINE (115 HP)

All Spyder F3 Limited model features, plus:

- New luxurious Mystery Blue colour and fully painted top case.
- 12-spoke silver-coloured wheels with satin finish.
- Adjustable driver backrest, ultra-comfortable adaptive foam seats with lumbar support and Sea-to-Sky embroidery.
- Modern silver-coloured trims and Sea-to-Sky badging.
- Adjustable side wind deflectors, coloured rear panel for a sportier look when the top case is not installed.



SCAN FOR PRICES

[canamonroad.com/prices](https://canamonroad.com/prices)



CUSTOMISE YOUR CAN-AM SPYDER RT AND RAISE THE BAR ON EXCITEMENT AND ADVENTURE.

Our latest collection of accessories and apparel is coming your way. They'll elevate your riding experience in more ways than one and the choice is yours for the making!



LINQ THERMAL BOX  
219400964

The versatile 16-liter LinQ Thermal Box is designed to keep things hot or cold, and always ready for when you need them.



LINQ LOCK  
860201968

Secure the LinQ cargo on your vehicle. The LinQ lock fits most LinQ accessories and can be transferred from one to another.



ADJUSTABLE SIDE WIND DEFLECTORS UPPER  
219401040

Regulate driver and passenger upper-body airflow. Change to closed, open or parallel position for optimal comfort.



BUILD YOURS

[canamonroad.com/configurator](https://canamonroad.com/configurator)

CE CERTIFIED GEAR

# PROTECTION WITH STYLE

WHEN THE OPEN ROAD BECKONS, YOU'D BETTER BE READY TO ANSWER THE CALL AND HEAD OUT. THANKFULLY, WITH OUR NEW CE CERTIFIED PROTECTIVE LINEUP THAT WILL KEEP YOU SAFE ON THE ROAD NO MATTER WHAT, YOU'LL HAVE EVERYTHING YOU NEED FOR A RIDE TO REMEMBER.



- 1. Relaxed fit for comfort and layering.
- 2. Removable SAS tech lightweight, flexible, modular protectors in shoulders and elbows.
- 3. Exterior and interior pockets for storage during your ride.
- 4. Rigorous safety testing and CE class A certified.
- 5. Water repellent.
- 6. Rib at bottom hem, collar and cuffs for custom fit.
- 7. Light insulation for mild-weather.

## MESH JACKETS



**MEN'S MESH JACKET**  
440925



**LADIES' MESH JACKET**  
440927

## BOMBER JACKETS



**MEN'S BOMBER JACKET**  
440924



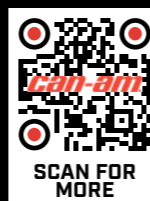
**LADIES' BOMBER JACKET**  
440926

### CAN-AM'S NEW BOMBER JACKET

# PERSONALIZE YOUR SPORTSWEAR

## MEN & WOMEN

- 1. **PACKABLE JACKET**  
454509
- 2. **PACKABLE VEST**  
454510
- 3. **LONG SLEEVE TEXTURED CREW KNIT**  
454510
- 4. **REVERSIBLE OVERSHIRT**  
454513
- 5. **CAN-AM SIGNATURE T-SHIRT**  
454430
- 6. **LADIES' PACKABLE JACKET**  
454513
- 7. **LADIES' PACKABLE VEST**  
454503
- 8. **LADIES' CREWNECK SWEATSHIRT**  
454504
- 9. **LADIES' POCKET CAMO T-SHIRT**  
454508
- 10. **LADIES' PERFORMANCE LONG SLEEVE**  
454505
- 11. **GO FURTHER FLAT CAP**  
454495
- 12. **CLASSIC BALL CAP**  
454497



[canamonroad.com/apparel](http://canamonroad.com/apparel)

# WHAT YOU NEED TO KNOW BEFORE YOU GO

WHETHER YOU'RE NEW TO THE GAME OR WANT TO GO THE NEXT LEVEL, FIND OUT HERE ESSENTIAL INFORMATION TO GET THE MOST OUT OF CAN-AM 3-WHEEL VEHICLES.

## PRACTICAL TIPS & TOOLS

### WHERE CAN YOU RIDE YOUR CAN-AM 3-WHEEL VEHICLE?

The Can-Am Spyder and the Can-Am Ryker models are "Freedom Machines" and can be ridden anywhere a street licensed vehicle can be operated. This generally means public roads that are open to street vehicles. Neither the Spyder or Ryker models are considered to be "off road" capable with their low ground clearance. Therefore, with any of our 3-wheel machines you want to stay on roads that are either paved (concrete, asphalt) or graded dirt roads, meaning they have been smoothed over by a road grader.

While Spyder models can be used gently and slowly on gravel roads, it is best to limit this type of use due to their belt drive system as we do not want to damage the sprocket or the belt drive. Ryker models use a direct drive system that is better suited to use on gravel roads, specifically the Ryker Rally that also features a unique tire design. This model can be

used on gravel or dirt roads if they are graded and smooth in nature. While not an off road machine, it does open up the world of smoother dirt and gravel roads of more remote and less populated areas.

While any riders can use their Spyder and Ryker models on high-speed 4-lane roads, most riders will find their best opportunity to be on the less-traveled state and county roads. Many will seek out the more scenic "back road" paths, winding and twisting roads that are more engaging and fun to experience as you are riding the machine instead of simply driving it. In this sense, the Can-Am Spyder or the Can-Am Ryker becomes your Freedom Machine to explore the millions of miles of roads open to you across the continent. You can enjoy a new adventure every day, with endless opportunities.



### IS RIDING A CAN-AM 3-WHEEL VEHICLE THE SAME AS RIDING A MOTORCYCLE?

In many ways riding a Can-Am Spyder or a Can-Am Ryker is similar to riding a motorcycle, but in some ways it is not. The vehicle dynamics are actually more similar to that of an ATV (all terrain vehicle or quad bike) or a Ski-Doo snowmobile. The rider skills of how to get the machine to maneuver and corner are different from riding a motorcycle, specifically steering through a corner. When riding a Can-Am Spyder or a Can-Am Ryker you steer into the corner and lean your body weight into the corner, just like one does when riding an ATV, snowmobile or Sea-Doo watercraft. This is to lower the overall center of gravity and to maintain vehicle attitude.

The three wheel architecture of the Can-Am Spyder and the Can-Am Ryker is much safer

than 2-wheel bikes in most every respect. Quite simply, the stability is far greater with three wheels instead of two. We call this the "Y-Factor". Also, the Spyder and Ryker models are packed full of the world's best safety features and electronic controls – ABS anti-lock brakes, traction control and stability control. These fully automatic system constantly monitor the operation of the machine to maintain traction, provide the most efficient and quickest braking distances and help to keep the machine planted on the ground and pointed in the right direction. Many sensor inputs are monitored by several on-board computers to ensure a safe ride experience. Combined with the stability of the Y-factor three-wheel design you have one of the safest open air experiences available today.

### WHAT DO YOU WEAR WHEN RIDING A CAN-AM 3-WHEEL VEHICLE?

What you wear while riding is a matter of personal preference, but there are some safety items that are mandatory to protect your health and well being. All drivers and passengers must wear a helmet and eye protection is always a good idea. Protective riding gear is highly recommended, even compulsory in some countries, specifically gloves as your hands are exposed on the handlebars and can catch rocks. Most riders will expand this coverage to include protective riding boots, pants and jacket – not only to keep them protected from being exposed but also to

stay warm and or dry, depending on the riding conditions. In cooler conditions you will want warmer gear, while riding on warmer days the vented gear will allow air flow to keep you cooler and dry. On rainy days you will still be able to ride with a proper rain jacket and pants.

Can-Am On-Road offers a full line of riding gear and accessories specifically designed for your Can-Am Spyder or Can-Am Ryker for all riding conditions! Have a look at [canamonroad.com/apparel](http://canamonroad.com/apparel) or visit your local dealer.



FIND A DEALER



R/DE  
LIKE  
NO  
OTHER™



**can-am**®

CANAMONROAD.COM

📷 @canamonroad

📘 canamonroad

#RideLikeNoOther #CanAmRyker #CanAmSpyder

VISIT YOUR CAN-AM ON-ROAD DEALERSHIP FOR DETAILS

